



yodeck



Out of the Box Digital Signage

Sharp/NEC and Yodeck offer a fully integrated solution for an unbeatably easy digital signage experience.

Digital signage is the future of dynamic communication, capturing attention and engaging audiences . Through our partnership, combining Sharp/NEC visual technology with Yodeck's easy to use signage system, you are assured of the utmost reliability and security.

Take your company to the next level with NEC MultiSync® Displays integrated with the MPI-4 Yodeck kit enabling instant access to Yodeck's free and unique apps.

The benefits of NEC MultiSync® Large Format Displays:

High quality manufacture for long life reliability, robust against the most demanding usage.

- Models for budget-conscious to mission-critical usage
- Sizes from 32 to 86-inch
- 4K UHD pixel-free viewing
- Landscape / portrait orientation
- NaviSet Administrator 2 remote management software
- Integrated computing: choose Intel®SDM or NEC MPI4 Mediaplayer

[LEARN MORE](#) about Sharp/NEC Displays

The benefits of Sharp/NEC modular computing:

Customisable open, modular computing options seamlessly embedded into NEC displays.

- Integrated computing options available for 43 to 86 inch displays
- Allows for maximum flexibility and scalability
- Minimised power consumption
- No additional cabling and power supply needed
- Sustainable solution

[LEARN MORE](#) about Sharp/NEC modular computing

The benefits of Yodeck:

Easy way to share content on screens, connecting with audiences in a dynamic and engaging way.

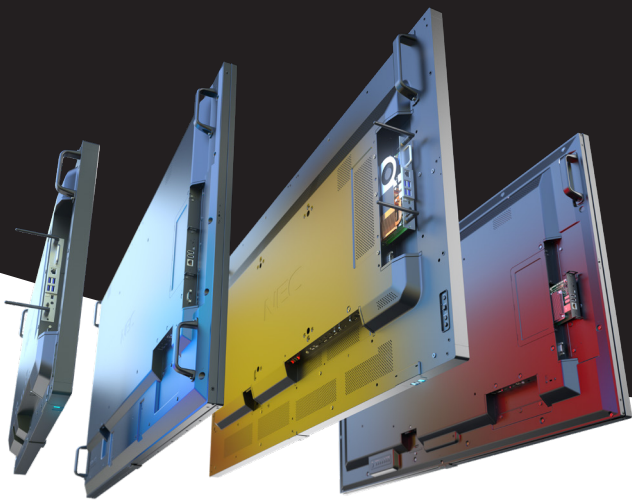
- Easy setup
- Free screen layout templates
- Free apps
- Supports any screen resolution
- Intuitive scheduling
- Total remote screen management
- Auto-upgrades & remote support
- Extreme security & reliability

[LEARN MORE](#) about Yodeck

SHARP / NEC

Choose your Signage Displays:

With a wide range of large format displays featuring integrated computing power, Sharp/NEC meets the needs of every application and budget. Our trusted reliability and long-life sustainability are included as standard.

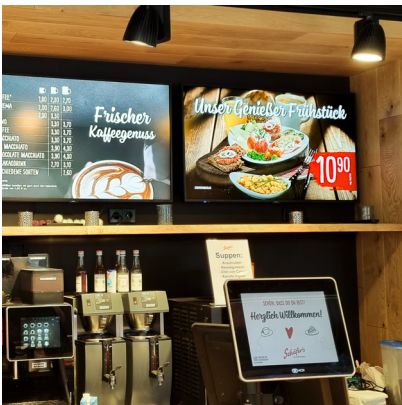


	ME Series	M Series	MA Series	P Series
32"*		✓		
43"	✓	✓	✓	✓
49"/50"	✓	✓	✓	✓
55"	✓	✓	✓	✓
65"	✓	✓		
75"		✓		✓
86"		✓		
Haze Level	Standard (1)	Pro (28)	Pro (28)	Pro (28)
Operating Hours	18/7	24/7	24/7	24/7
Brightness	400 cd	500 cd/ 32": 450cd	500 cd	700 cd
Resolution	4K UHD	4K UHD/ 32": FHD	4K UHD	4K UHD
Contrast	≥ 8000:1	≥ 8000:1/ 32": 1100:1	≥ 8000:1	≥ 8000:1
Colour Space	Standard	Standard	Wide Colour	Wide Colour/ 75": Standard

* M321 working with an external Yodeck Player

Secure investment:

Should future requirements change, the integrated module can be upgraded or re-configured accordingly without having to replace the display. Our wide range of slot-in technology offers unlimited versatility.



RaspberryPi Compute Module 4

CPU	Quad Core 64-bit ARM Cortex 72 (ARM v8) @ 1.5GHz, VideoCore IV GPU
Graphics	Hardware video encode / decode H.265 (HEVC) (up to 4Kp60 decode), H.264 (up to 1080p60 decode, 1080p30 encode), OpenGL ES 3.0 graphics
RAM	4Gbyte LPDDR2 SDRAM
Memory/Storage	32 GByte on-board eMMC
CMS System	Yodeck (pre-installed)
	LEARN MORE